



**THUASNE**

# **MOBIDERM** *autofit*

**Lymphedema solutions**  
enhancing patients' autonomy



# MOBIDERM *autofit*

*The **MOBIDERM** standard, self-adjustable sleeve, to adapt to each patient's individual morphology and evolution overtime!*

## DESCRIPTION :

- **For upper limb lymphedema: MOBIDERM autofit** self-adjustable armsleeve, with mitten and thumb
- **For lower limb lymphedema: MOBIDERM autofit** self-adjustable sock or thigh-high stocking

## FOR WHICH PATIENTS?

- For all stages of the lymphedema
- To be used during the maintenance phase or at the end of the reduction phase
- For patients presenting dysmorphisms or progressive edema
- For patients who wish autonomous control of their edema
- For patients who need a product immediately

## MAIN COMPONENTS:

- **Outer layer of the garment** : 59% polyamide, 41% elastane
- **Mobiderm along the arm / the leg** : adhesive non-woven, polyurethane foam (15 x 15 mm cubes)
- **Mobiderm hand / foot level** : adhesive non woven, polyethylene foam (5 x 5 mm cubes)

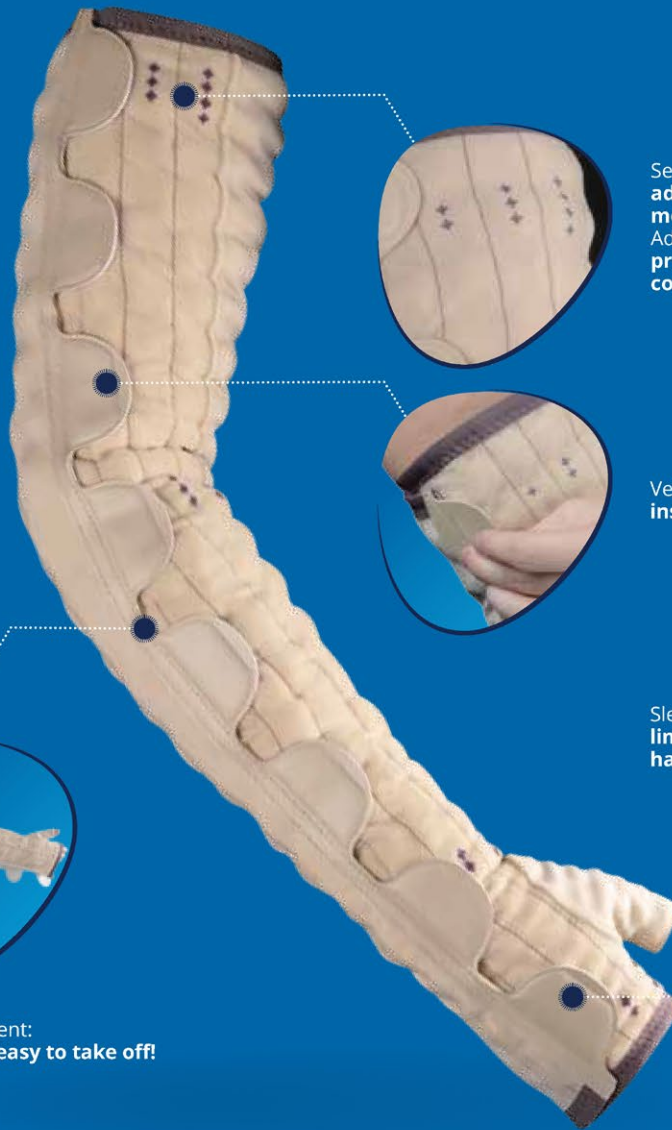


Standard products:  
**fast delivery!**



# UPPER LIMB : ARMSLEEVE

**PATENTED  
DEVICE**



Several tightening notches:  
**adaptation to each patient's individual morphology.**  
Adjustment marks:  
**precise and repeatable application, control of the edema volume variation**

Velcro fasteners:  
**instant setup and high performance**

Sleeve with attached retractable mitten:  
**limits the risk of edema migration; the hand can be freed for usual tasks**



Semi-open garment:  
**easy to put on, easy to take off!**



Anatomical  
markers



Anatomical markers	Axillary arm circumference (e)	Forearm circumference (at the widest point) (d)	Wrist circumference (c)	Hand circumference (b)	Reference	
					Normal $\ell = 40 - 45$ cm	Long $\ell = 45 - 50$ cm

### MOBIDERM *autofit* ARMSLEEVE : RIGHT ARM

T1	25 - 32	22 - 28	15 - 19	17 - 21	37330220100261	37330220100271
T2	29 - 36	24 - 30	16 - 20	17 - 21	37330220200261	37330220200271
T3	33 - 40	26 - 32	17 - 21	18 - 22	37330220300261	37330220300271
T4	37 - 44	28 - 34	17 - 21	18 - 22	37330220400261	37330220400271
T5	41 - 48	30 - 36	18 - 22	19 - 23	37330220500261	37330220500271
T6	45 - 52	31 - 37	19 - 23	20 - 24	37330220600261	37330220600271

### MOBIDERM *autofit* ARMSLEEVE : LEFT ARM

T1	25 - 32	22 - 28	15 - 19	17 - 21	37330220100262	37330220100272
T2	29 - 36	24 - 30	16 - 20	17 - 21	37330220200262	37330220200272
T3	33 - 40	26 - 32	17 - 21	18 - 22	37330220300262	37330220300272
T4	37 - 44	28 - 34	17 - 21	18 - 22	37330220400262	37330220400272
T5	41 - 48	30 - 36	18 - 22	19 - 23	37330220500262	37330220500272
T6	45 - 52	31 - 37	19 - 23	20 - 24	37330220600262	37330220600272

# LOWER LIMB : BELOW KNEE OR THIGH-HIGH STOCKING

**PATENTED  
DEVICE**



Semi open garment :  
easy to put on, easy to take off



Several tightening notches:  
adaptation to each patient's individual morphology

Adjustment marks:  
precise and repeatable application,  
control of the edema volume variation



Anti-slip sole :  
limits slippage when walking



Velcro fasteners:  
instant setup and high performance

Double row :  
wide adaptation range, allows right  
or left leg use



## BELOW KNEE

### MOBIDERM *autofit* BELOW KNEE

	Ankle level (B)	Calf level (C)	Knee level (D)	Reference (unique code right/left leg)			
				Short ℓ (D) : 38 - 40 cm	Normal ℓ (D) : 40 - 42 cm	Long ℓ (D) : 42 - 44 cm	Xtra Long ℓ (D) : 44 - 46 cm
<b>T1</b>	16-24	24-35	25-36	37340120100231	37340120100232	37340120100233	37340120100234
<b>T2</b>	20-28	32-43	32-43	37340120200231	37340120200232	37340120200233	37340120200234
<b>T3</b>	24-32	40-51	39-50	37340120300231	37340120300232	37340120300233	37340120300234
<b>T4</b>	28-36	48-59	46-57	37340120400231	37340120400232	37340120400233	37340120400234

## THIGH-HIGH STOCKING

### MOBIDERM *autofit* THIGH-HIGH STOCKING

	Ankle level (B)	Calf level (C)	Thigh level (CG)	Reference (unique code right/left leg)			
				Short ℓ (G) : 67 - 72 cm	Normal ℓ (G) : 72 - 77 cm	Long ℓ (G) : 77 - 82 cm	Xtra Long ℓ (G) : 82 - 87 cm
<b>T1</b>	16-24	24-35	46-57	37350120100231	37350120100232	37350120100233	37350120100234
<b>T2</b>	20-28	32-43	53-65	37350120200231	37350120200232	37350120200233	37350120200234
<b>T3</b>	24-32	40-51	61-72	37350120300231	37350120300232	37350120300233	37350120300234
<b>T4</b>	28-36	48-59	68-80	37350120400231	37350120400232	37350120400233	37350120400234



# MOBIDERM autofit

## CARE INSTRUCTIONS

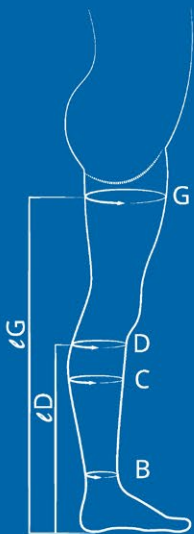
*Close the velcro fasteners prior to washing.*

### Two wash options are possible:

- **Hand wash:**  
Soak the device in cold soapy water, rub with a clean sponge and squeeze the water out by pressing.
- **Machine wash:**  
Use the wool cycle, at cold temperature, and use a laundry net. Hand squeeze the water out by pressing.

*In both cases, let dry at room temperature away from any direct source of heat.*

When not used, the sleeve should be kept flat, with the velcro fasteners closed. If it must be folded, position the hooks pointing outward.



#### Anatomical markers :

- B : ankle circumference (at the narrowest point)
- C : calf circumference (at the widest point)
- D : below knee circumference (on the head of the fibula)
- G : thigh circumference (at the widest point)
- ∟D : floor-to-knee height (for the sock – measurement taken below the bend of the knee, back side)
- ∟G : floor-to-thigh height (for the thigh-high stocking – measurement at the gluteal fold)



# Interest of an auto-adjustable nighttime compression of upper limb lymphedema:

S. Mestre<sup>1,2</sup> & C. Calais<sup>1</sup> & G. Gaillard<sup>1</sup> & M. Nou<sup>1</sup> & M. Pasqualini<sup>3</sup> & C. Ben Amor<sup>3</sup> & I. Quere<sup>1,2,4</sup>  
*Supportive Care in Cancer - DOI 10.1007/s00520-017-3652-5*

*1 Internal and Vascular Medicine Department, Hopital St-Eloi, Montpellier, France*

*2 Female specificity of the dysfunctions of Vascular Interfaces Laboratory EA2992, University of Montpellier and Nimes, France*

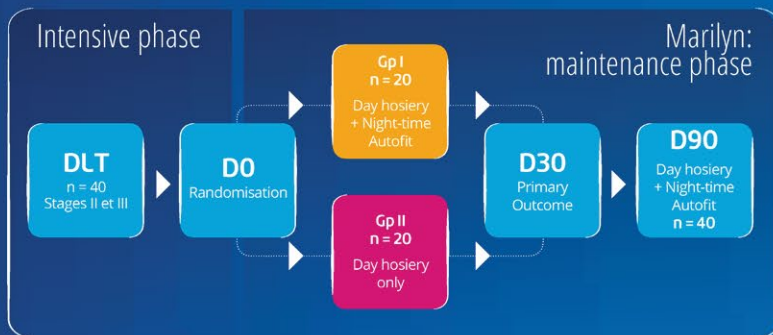
*3 THUASNE, Levallois-Perret, France - 4 Clinical Investigation Center, INSERM CIC 1001, Montpellier, France*

## INTRODUCTION:

Rebound effect of lymphedema volume is observed after Decongestive Lymphedema Therapy (DLT) in patients with Breast Cancer Secondary Lymphedema (BCSL). Successful outcomes of lymphedema long term treatments are depending on patient compliance.

## OBJECTIVE:

The main objective of this proof of concept study was to assess the efficacy and safety of **MOBIDERM autofit** as night treatment for maintenance phase after DLT on top of daily Thuasne Lymphology compression. Secondary objectives were to assess compliance and satisfaction of patients equipped with **MOBIDERM autofit** device.



## RESULTS:

Description of the population (Years)

- Mean age : **67**
- Mean time since diagnosis of breast cancer: **11**
- Mean time since lymphedema diagnosis: **7**
- Lymphedema Stages: **II, III**



## COMPLIANCE RESULTS:

How often have you worn **MOBIDERM autofit** during the study? (both Gp I and II)

**90 % of patients have worn MOBIDERM autofit every night**

Every night (dark blue) 4 to 6 days per week (orange)

## SATISFACTION RESULTS\*:

How would you rate **MOBIDERM autofit** ?

Easy / Very easy to put on	→ 70 % of patients
Quick fitting	→ 85 % of patients
Useful self adjustment	→ 89 % of patients
Easy / Very easy to take off	→ 98 % of patients
Comfortable	→ 90 % of patients

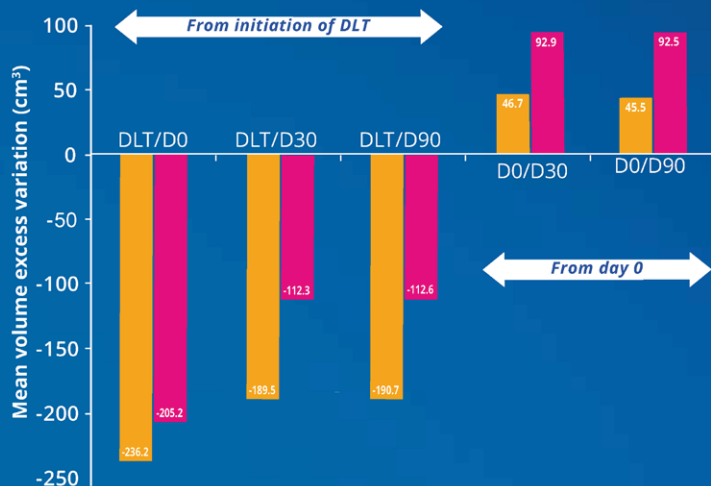
**82 % of the patients**  
already wearing compression  
do prefer  
**MOBIDERM autofit**

\* Patient questionnaire submitted to each enrolled patient at the end of the study



# sleeve (**MOBIDERM autofit**) in maintenance phase the MARILYN pilot RCT

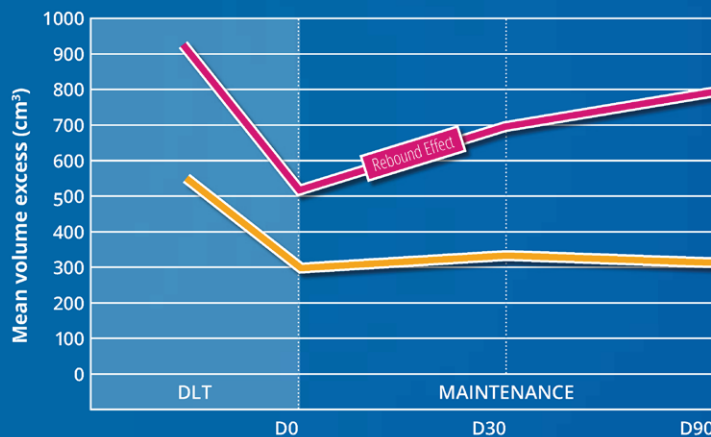
## EFFICACY RESULTS:



Absolute mean volume excess variations (cm<sup>3</sup>)

- Vol excess variation D0/D30 (%): 1,80 in Gp I vs 3,20 in Gp II (NS)
- At day 30, 85 % of DLT effect is maintained in Gp I vs 54 % in Gp II

Group I  
Group II



Volume variation in High Responders (HR) patients (cm<sup>3</sup>)

- **MOBIDERM autofit** benefit is more pronounced among High Responders DLT (Loss of 35 % during DLT - POLIT study, JMV 2014)

HR Gp I  
HR Gp II

## CONCLUSION / DISCUSSION:

Results of primary criterion suggest that **MOBIDERM autofit** tends to limit rebound effect of lymphedema after DLT, especially in patients who were strongly responsive to DLT. Between D30 and D90, study period in which all 40 patients were fitted with the study medical device, a lymphedema volume stabilizing effect is observed.

Results of secondary criteria show that **MOBIDERM autofit** displays favorable characteristics that increase patient's independence from specialized medical staff or relatives while keeping high level of patient's compliance in maintenance phase.

**MOBIDERM autofit** night sleeve, on top of daily compression, could offer benefit to patients during maintenance phase of lymphedema treatment and enhances patient's autonomy.



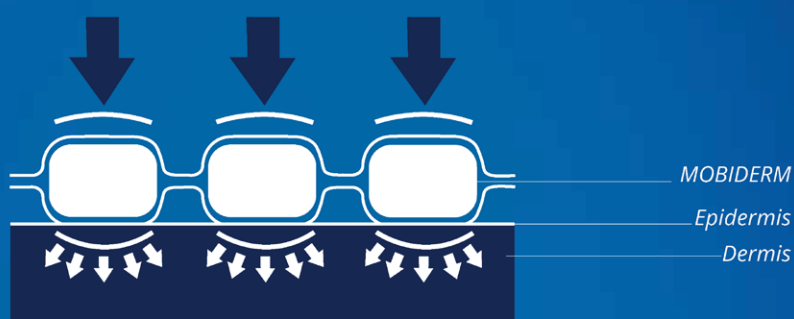
**THUASNE**

# About **MOBIDERM** DEVICE

**MOBIDERM** is a medical device made up of foam cubes encased between two non-woven bandages. The **MOBIDERM** technology can be used under a reducing bandage (in its bandage version or mobilising plate), or incorporated into mobilising garments.

Thanks to the pressure difference it creates between the support area of the cubes and their surrounding area, it improves the flow of lymphatic fluid and optimizes the drainage efficacy.

Through a shearing effect on the edematous subcutaneous tissues, **MOBIDERM** also softens the fibrotic or sclerotic cutaneous areas.



## **MOBIDERM IS A HIGH-TECH ANTI-EDEMA COMPRESSION DEVICE**

**PATENTED  
DEVICE**



### • **EFFECTIVE**

- rapid reduction of the volume of the edema,
- softening of fibrotic, sclerotic or edematous skin.

### • **PRACTICAL**

- light, comfortable and flexible, it enables the patient to keep the freedom of movement and hence the limb's drainage capacity.

### • **COMFORTABLE**

- soft skin contact,
- conformability of product for improved anatomical fit.

**THUASNE SAS**

120, Rue Marius AUFAN - CS10032 - 92309 Levallois-Perret Cedex - France  
e-mail : sales.export@thuasne.fr

[www.thuasne.biz](http://www.thuasne.biz)

