



Compression for
those who love to
**Move
Freely**

Kimberly,
Secondary lymphedema patient

JOBST® Confidence

The Next Generation of Made-to-Measure
Flat-Knit Compression Garments

**NEW
& UNIQUE**

Introducing a **New Era of Comfort**

JOBST® Confidence helps your patients feel unrestricted, with a one-of-a-kind fit garment that's as unique as they are. The new generation of flat-knit technology used in JOBST® Confidence allows for a precise fit to the real anatomical body shapes. This personally refined fit not only provides comfort, but also supports your patients with a greater degree of movement.

The new **Contour Fit** technology

JOBST® Confidence has been expertly developed with a new knitting technology that, unlike traditional flat knit, allows the fit of the garment to adapt in more positions.

This supports a true personalization of garment fit. Specially designed knitting machines were created for the JOBST® Confidence line to deliver contour fit.

**INNOVATIVE
TECHNOLOGY**



Contour Fit



No Contour Fit

JOBST® Confidence is designed to:

- provide more comfort
- support easy donning
- be more skin-friendly
- deliver improved climate control
- provide better movement
- offer a range of colors and design options

JOBST® Confidence



Design options available in **Deco line** and **patient initials**



Innovative knitting method allows for high ability to **conform to individual body shapes**



Made with conforming fabric that also gives the reassurance of **firm support**



Advanced moisture-management system with double-layer construction for **optimal wearing comfort**



Flexible, conforming fabric is designed to make putting on and taking off easier



Skin-friendly fabric that meets the needs for **sensitive skin, pediatric, elderly, and lipedema** patients

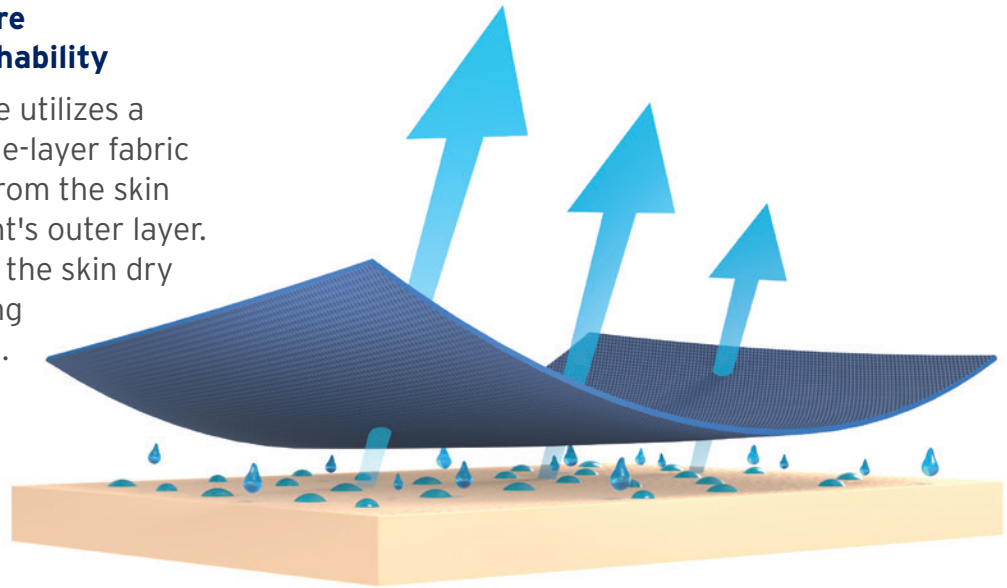
Garment shown includes knee comfort, Deco line and patient initials.



Next-generation technology

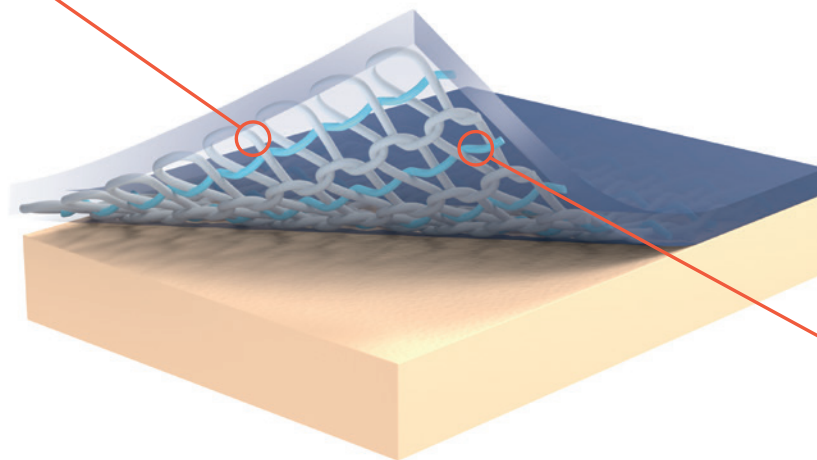
Unique built-in Moisture Management for breathability

Only JOBST® Confidence utilizes a high-performance double-layer fabric to wick away moisture from the skin and towards the garment's outer layer. This is designed to keep the skin dry and leave patients feeling comfortable all day long.



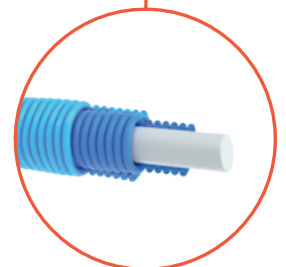
Softer yarns to support a comfortable feeling

JOBST® Confidence is created with supple yarns that have been used with a double-layered knitting construction. This provides the flexibility your patients want when wearing compression.



Firm support that adapts to each individual

The innovation in JOBST® Confidence garments means that for the first time ever, the properties of the yarn adapt to the real size of any patient. This always delivers the optimal compression level according to the RAL standard. The RAL standard is used as a basic requirement for certifying medical compression stockings and guarantees the highest quality by an independent group.



JOBST® Confidence - Innovative Technology for the freedom of flexible movement

Colors



Styles



Compression Classes

Upper Limb

CCL 1 ▶ 15 - 21 mmHg

CCL 2 ▶ 23 - 32 mmHg

Lower Limb

CCL 1 ▶ 18 - 21 mmHg

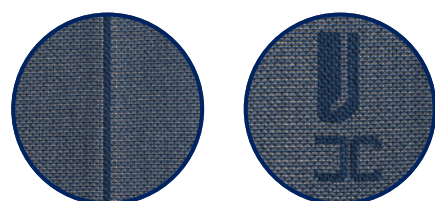
CCL 2 ▶ 23 - 32 mmHg

CCL 3 ▶ 34 - 46 mmHg



with SoftFit
technology

New Design Options



Deco Line

The deco line is positioned on the front of the garment

Patient Initials

Initials are located under the top band of the garment

Comfort Options



Elbow Functional
Zone

Slant Toe

Ankle Functional
Zone



JOBST® Elvarex® Portfolio – Offers a complete

JOBST® Elvarex® – with Natural Rubber Core

JOBST® Elvarex Key Features

- Flat-knit structure bridges skin folds instead of working into them
- Latex core provides excellent containment and allows garment to return to original shape for extended wear
- Excellent breathability for comfort and patient compliance
- Seven compression classes for optimal therapeutic outcomes
- Vast product assortment covers a diverse range of specifications and requirements of patients
- SPF 80 UV protection



Basic Styles



Compression classes



Extremities / Colors

Upper	1-2	Beige	Black	Navy	Honey	Cranberry	Cherry	Caramel			
	2-Forte	Beige	Black	Navy	Honey	Cranberry	Cherry				
Lower	1-4 Super	Beige	Black	Navy	Cocoa	Cranberry	Grey	Henna**	Graphite**	Denim**	

* Not available in Toe Cap

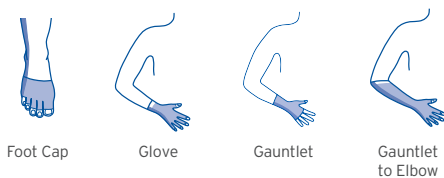
JOBST® Elvarex® Plus®

Seamless 3D Knitting Technology – Pairs with Confidence Line

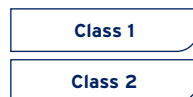
JOBST® Elvarex® Plus® Key Features

- 3D technology to closely conform to hands and feet
- The seamless helps eliminate potential irritation
- Elvarex Plus styles pairs with the Confidence line

Basic Styles



Compression classes



Type / Colors

Hand	Beige	Black	Navy	Honey	Cranberry	Caramel	Cherry	Red	
Foot	Beige	Black	Navy	Cocoa	Cranberry	Grey	Red		

te range that's as individual as your patients

JOBST® Elvarex® Soft

Softer, Latex-Free Garment

**LATEX
FREE
FORMULA**

JOBST® Elvarex® Soft Key Features

- Specialized seam yarns for a smoothhand gentle seam against the skin
- Well suited for pediatric or elderly patients and patients with lipedema or sensitive skin
- Excellent anatomical fit
- Latex-free garment



Basic Styles



Compression classes



Extremities / Colors

Upper CCL 1-2	● Beige	● Black	● Navy	● Cocoa	● Grey	● Cranberry	● Cherry	● Honey
Lower CCL 1	● Beige	● Black	● Navy	● Cocoa	● Grey	● Cranberry	● Cherry	

JOBST® Elvarex® Soft Seamless

Soft and Seamless for Hands and Feet

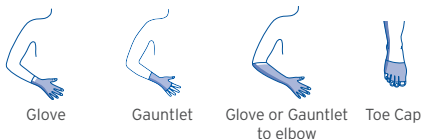
**LATEX
FREE
FORMULA**

JOBST® Elvarex® Soft Seamless Key Features

- Soft, durable, and breathable flat-knitted fabric
- Flat edge finish at fingers and toes decreases bulk and prevents curling
- Easy to don, comfortable to wear
- Latex-free garment to pair with Confidence line



Basic Styles



Compression classes



Extremities / Colors

Upper CCL 1-2	● Beige	● Black	● Navy	● Cocoa	● Grey	● Cranberry	● Cherry	● Honey
Lower CCL 1-3	● Beige	● Black	● Navy	● Cocoa	● Grey	● Cranberry	● Cherry	



The Jobst Compression Institute serves as a resource for healthcare providers and clinicians seeking further education about vein diseases and lymphedema. Train on JOBST products with proper measuring and fitting techniques - up to 9 hours of CEU credits available.

Register at

<http://www.jobstcompressioninstitute.com>

US Customer Service Hours

Monday - Friday
8:00am - 6:00pm ET

US Customer Service Contact Information

Tel. 1-800-537-1063
Fax 1-800-835-4325
Email: hms-elvarex-orders@essity.com

Available On-Line 24 hours per day, 365 Days per Year

Standard Products: www.bsnesshop.us
Custom Products: <https://order.jobst.com/us>

Please refer to the product label and / or package insert for full instructions on the safe use of these products.



JOBST®,
an Essity brand



/JOBSTUSA



@JOBST_USA



@JOBSTforUSA



jobst-usa.com

BSN Medical Inc., an Essity company
5825 Carnegie Blvd., Charlotte, NC 28209-4633
Tel. (+1) 704 554 9933 Fax (+1) 800 835 4325
To order toll-free: Tel. (+1) 800 537 1063

64037 R1 ©2020 BSN Medical Inc. J20