



Seamless Options

Models:

2300 Seamless Glove & Gauntlets



- Seamless
- Smooth appearance

Compression	(2301) 20-30 (2302) 30-40 mmHg
Styles	AC Gauntlet (2301/02) ACFS Glove (2301)
Regular Sizes	S, M, L, XL
Colors	Beige, Black

Soft Seamless Glove & Gauntlets



- Added durability in the palm
- Channeled fingers for greater ease in donning

Compression	(2000) 15-20, (2001) 20-30, (2002) 30-40 mmHg
Styles	AC Gauntlet (2000/01/02) ACFS Glove (2000/01)
Regular Sizes	S, M, L, XL specify right or left
Colors	Beige, Black, Chocolate, Cinnamon, Chestnut, White Pink, Trend Colors, Prints (AC)

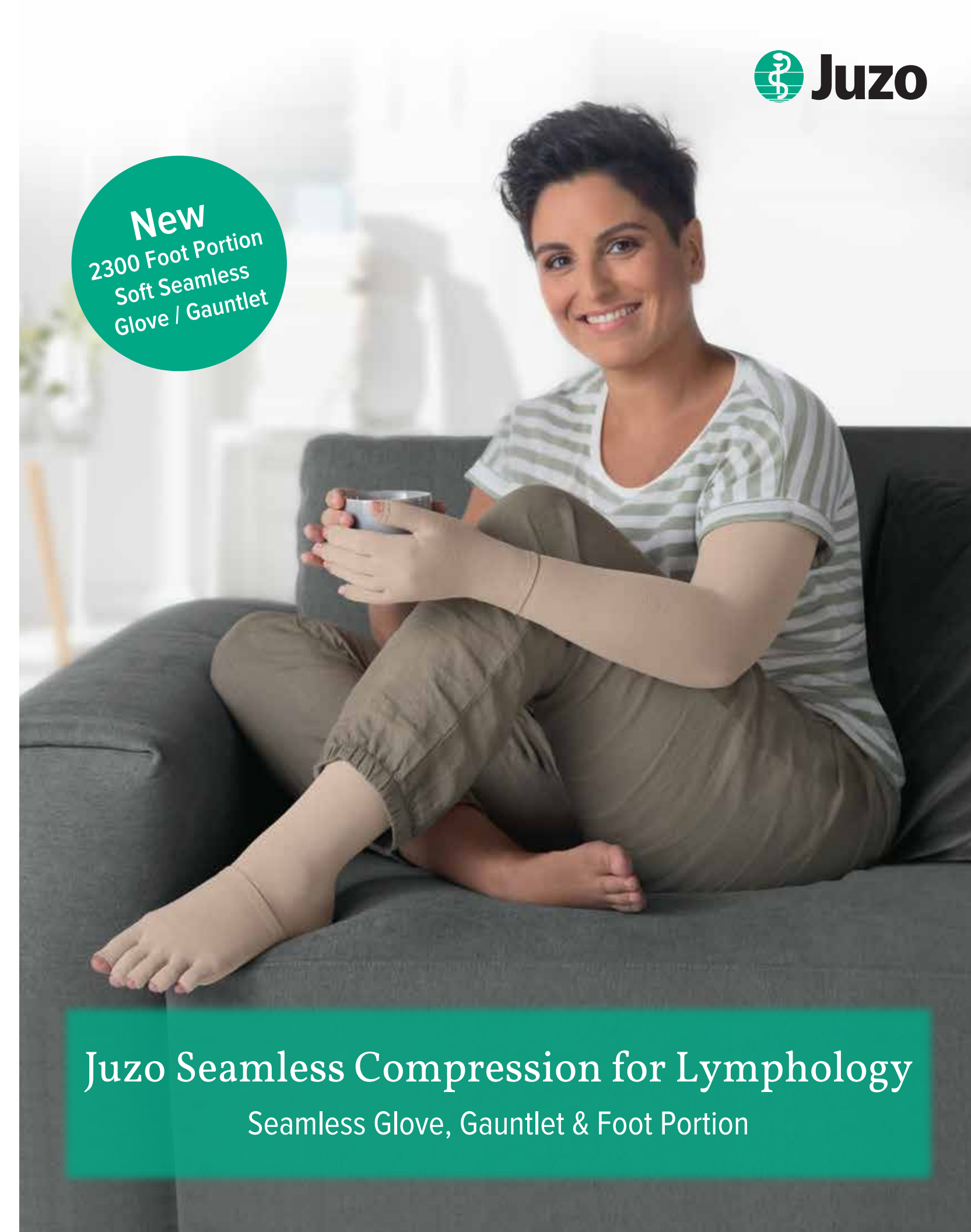
2300 Seamless Foot Portion



- Anatomical shape, providing a precise fit
- 3D comfort zones in sensitive areas, providing high wearing comfort.

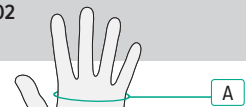

Compression	(2300) 15-20, (2301) 20-30 mmHg
Styles	FP (2300/01)
Regular Sizes	S, M, L, XL, XXL
Colors	Beige, Black

New
2300 Foot Portion
Soft Seamless
Glove / Gauntlet





Size chart

Juzo 2000 & 2300 Seamless Glove or Gauntlet

Item # 2000/01/02 & 2301/02 AC & ACFS	S	M	L	XL
	17.5 – 19.5 cm 6 7/8" - 7 5/8"	19.5 – 21.0 cm 7 5/8" - 8 1/4"	21.0 – 23.0 cm 8 1/4" - 9 1/8"	23.0 – 25.5 cm 9 1/8" - 10 1/8"
	14.5 – 16.5 cm 5 5/8" - 6 1/2"	16.5 – 18.0 cm 6 1/2" - 7"	18.0 – 20.0 cm 7" - 7 7/8"	20.0 – 22.0 cm 7 7/8" - 8 5/8"

PCSZ-01-62

Juzo 2300 Seamless Foot Portion

Item # 2300, 2301 FP	S	M	L	XL	XXL
	19.5 – 22.5 cm 7 5/8" - 8 7/8"	22.5 – 25.0 cm 8 7/8" - 9 3/4"	25.0 – 27.5 9 3/4" - 10 7/8"	27.5 – 30.0 10 7/8 - 11 7/8"	30.0 - 32.5 11 7/8" - 12 7/8"
	19.5 – 22.5 cm 7 5/8" - 8 7/8"	22.5 – 25.0 cm 8 7/8" - 9 3/4"	25.0 – 27.5 9 3/4" - 10 7/8"	27.5 – 30.0 10 7/8 - 11 7/8"	30.0 - 32.5 11 7/8" - 12 7/8"

PCSZ-01-61a

Juzo Seamless Compression for Lymphology
Seamless Glove, Gauntlet & Foot Portion



Juzo Seamless

Seamless compression for lymphology

Juzo Seamless Products are the ideal solution for early stages of Lymphedema therapy.

Innovative fabric

The innovative knitting technology enables seamless manufacturing of compression garments. The soft 3-dimensional fabric conforms perfectly to anatomical features and produces well-defined gradient compression. The innovative seamless fabric is breathable and is comfortable against the skin. Thanks to its soft characteristics, the fabric offers high wearing comfort and makes donning and doffing easy.

Optimal fit

The lengthwise knitted structure guarantees easy donning while allowing efficient compression modeling and additional stability. The top borders are especially soft and pressure-minimized. This prevents the borders from rolling up and avoiding any constrictions or pressure points.

Features

- light weight material
- breathable and comfortable against the skin
- smooth and seamless
- easy donning and doffing

Indications

- early stages of edema and swelling
- mild to moderate lymphedema



seamless
knitting



standard sizes

New Juzo Soft Seamless Glove & Gauntlet

The anatomical shape of fingers and thumb, along with the enclosure of the thumb webbing ensure a precise and comfortable fit. The 3D comfort zone in the sensitive area between the thumb and index finger prevents the fabric from creasing and protects the skin from irritation. It is designed not to restrict the thumb movement in any way.

Minimal pressure finger borders

- Prevents constrictions and pressure points
- Especially soft



Longitudinal structure

- Increased stability
- No constrictions or rolling
- Easy Donning

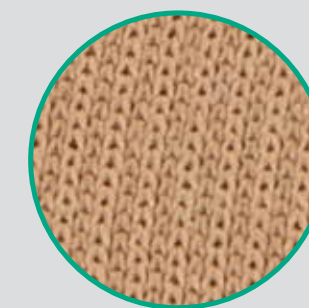
Minimal pressure top border

- Prevention of constrictions and pressure points
- Extremely soft



3D comfort zone

- Non-creasing
- Optimum movement of the thumb



Ribbed palm to increase grip & durability

- Ribbing for added durability & increased grip in the palm
- Ribbed knitting in hand makes it specific for right or left hand fit

New Juzo 2300 Seamless Foot Portion

The knitted length of the toes ensures additional stability and easy donning of the toe portion. The 3D comfort zone in the sensitive area between the big toe and the ball of the foot has a precise anatomical shape. This allows a precise fit and prevents the fabric from creasing, protecting the skin from irritation and providing a high wearing comfort.

Minimal pressure top border

- Prevention of constrictions and pressure points
- Extremely soft

Minimal pressure toe borders

- Prevents constrictions and pressure points
- Extremely soft

Toe Portion Design

- Increased stability
- No constrictions or rolling
- Easy donning
- Micro massage effect

3D ball joint zone

- No creasing
- Optimum mobility of the big toe